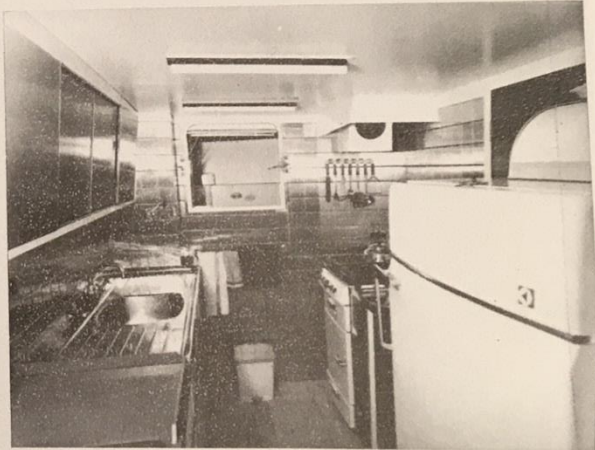
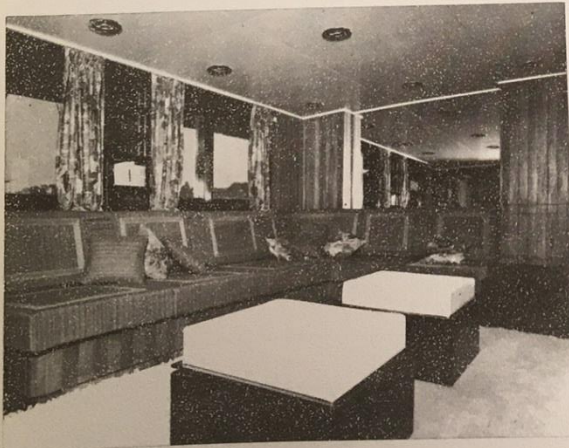
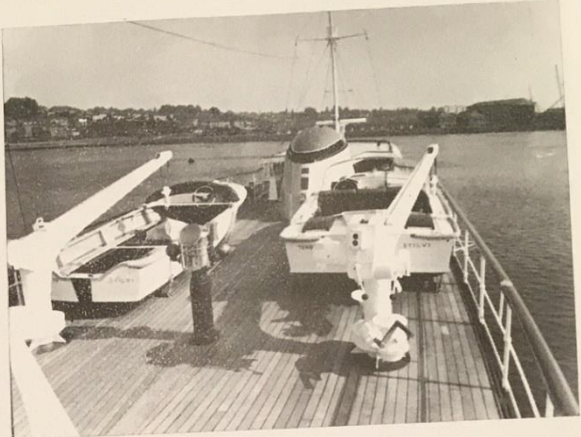




Price	SOLD
Name	Aurora (ex. Stilvi; Bearcat; Rossana; Elefthera; St. Anna)
Builder	Camper & Nicholson's Shipyards
Origin	United Kingdom
Year/Refit	1964 / 2003
Overall Length	31.20 m / 102' 04"
Length at Waterline	28.96 m / 95' 00"
Beam	5.30 m / 17' 04"
Draught max.	2.20 m / 07' 02"
Gross tonnage	135 grt
Displacement	89.00 tonnes
Engines	2 x 460 hp Gardner 8L3B
Speed (Max / Cruise)	12 knots / 11 knots
Range	2500 nm @ 11 knots
Fuel Capacity	21500 lts
Accommodation	8 guests in 5 staterooms, 5 crew in 4 cabins
Type	Motor Yacht
Class	Bureau Veritas
Flag	-
Hull Type	Mono Hull
Hull Material	Steel
Superstructure Material	Aluminum
Hull Configuration	Displacement
Number of Decks	2
Naval Architecture	Camper & Nicholson's
Exterior Design	Camper & Nicholson's
Interior Design	Camper & Nicholson's





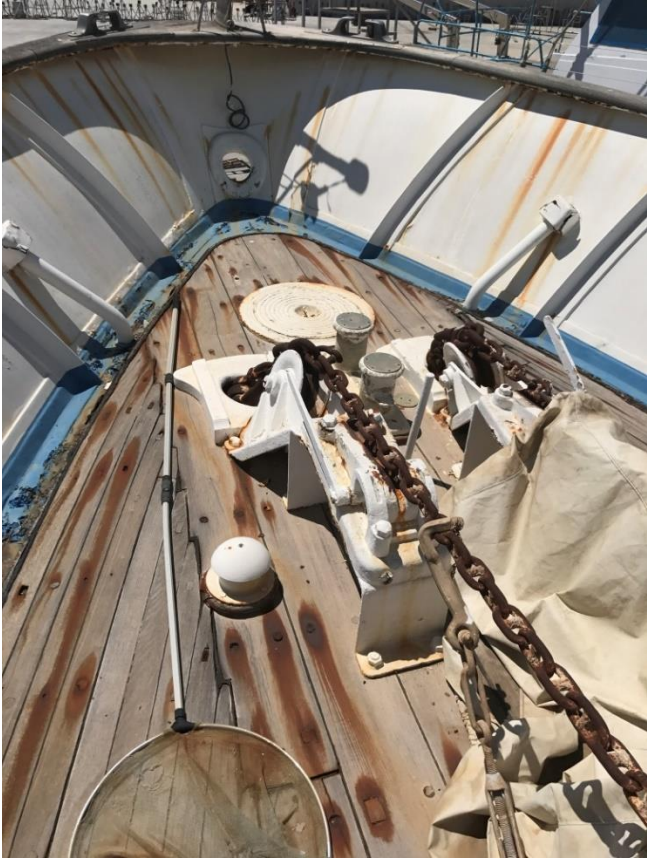




















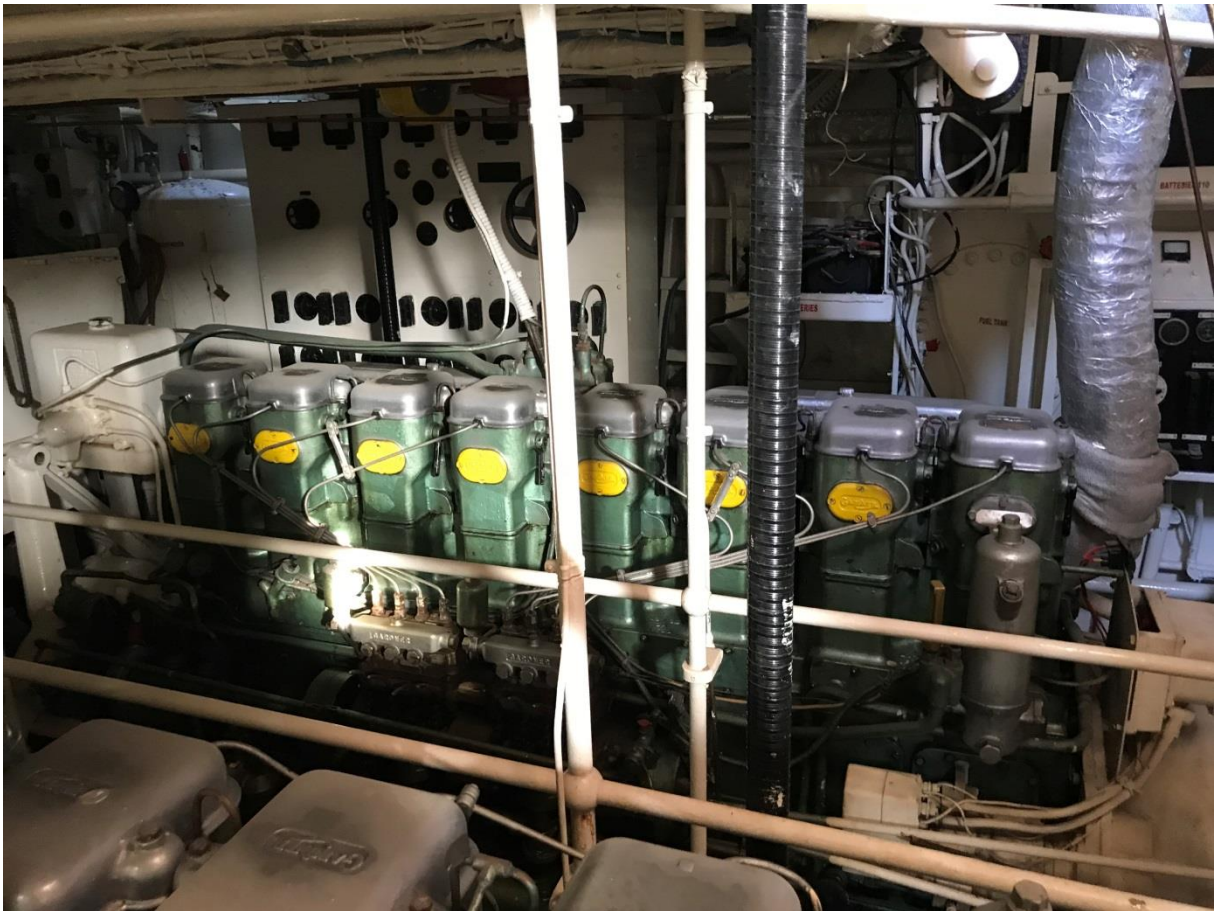








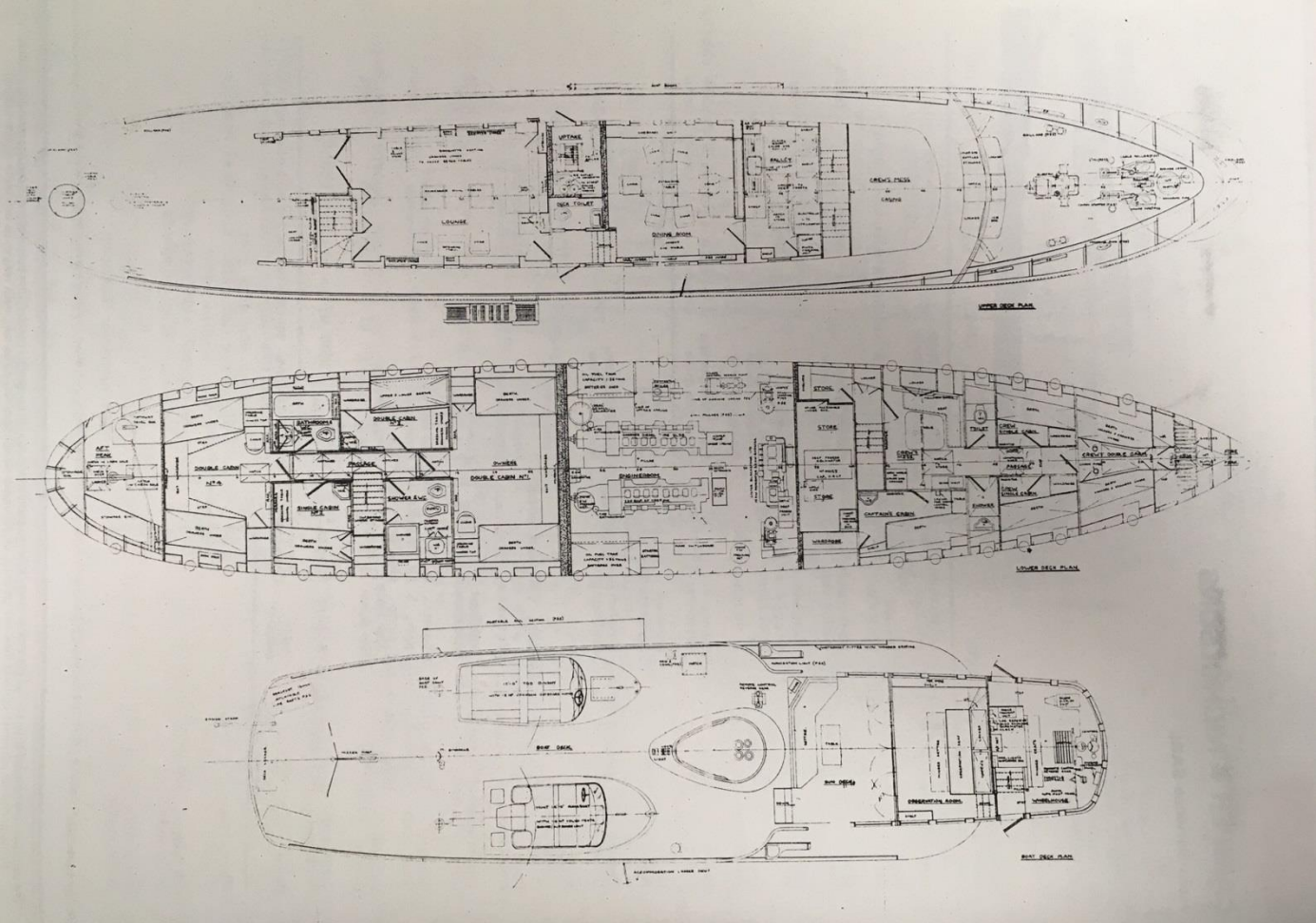








GENERAL ARRANGEMENT



**SUMMARY**

From the Camper & Nicholsons shipbuilding company in the United Kingdom the AURORA is 31.00 m length. Superyacht AURORA can accommodate up to 8 guests with 5 qualified crew. Her former names or project names are Stilvi; Bearcat; Rossana; Elefthera. She will reach a maximum speed of 12 knots.

Camper & Nicholsons was the naval architect firm involved in the technical superyacht design work for AURORA. Also the company Camper & Nicholsons skillfully worked on this project. the United Kingdom is the country that Camper & Nicholsons constructed their new build motor yacht in. After the official launch in 1964 in Southampton she was afterwards passed over to the happy owner after sea trials and testing. Her core hull was constructed with steel. The motor yacht main superstructure is made extensively from aluminium. With a beam of 5.30 metres AURORA has moderate internal space. She has a fairly shallow draught of 2.20 m . She had refit maintenance and alteration work completed in 2003.

The 8L3B engine installed in the motor yacht is built by Gardner. She is driven by twin screw propellers. The engine of the yacht creates 460 hp (or 169 kilowatts). She is equipped with 2 engines. The combined output for the yacht is thus 920 hp / 338 kW. As far as stabilisers are concerned she was built with Vosper.

Providing staterooms for a maximum of 8 welcome guests overnighting, the AURORA accommodates them in style. The boat uses around 5 able yacht crew to operate.

KEY FEATURES

- Refit maintenance completed in 2003
- Designed by Camper & Nicholsons
- Gardner 8B3L main engines
- Vosper stabilisers
- Gentilman's motor yacht
- Will be delivered "as is where is"
- Needs to be fully refitted

All speeds, measurements, capacities, consumptions, etc., may be approximate or estimated. Specifications provided for information only. Data was obtained from sources believed to be reliable and is not guaranteed by Owner or Brokers. Buyer assumes the responsibility to ascertain the correctness of all data contained herein and otherwise provided and must instruct his agent and surveyors to confirm all details for accuracy prior to purchase. Subject to prior sale, price and inventory change, or withdrawal from market without notice.